

# A SPIN *for* EVERY SPACE

The Swivel Chair



vipp



## ABOUT THE CHAIR

Though a recent addition to Vipp's portfolio, the Swivel chair is already carving out its place. Available in multiple variations - with castors or gliders, extra padding or none, adjustable or fixed height - the chair adapts to workspaces, meeting rooms, home offices, and dining settings alike.

Designed with a swivel base, soft seat, and slender aluminium frame, the chair offers flexible seating with a smooth, effortless spin.

*An evolution in comfort and function.*



Vipp452 in Bosco leather





1939 *Founder Holger Nielsen with his wife, Marie, for whom he made the original pedal bin.*

*Holger created the first pedal bin for Marie's hair salon.*



*The original pedal bin and the original Vipp logo.*



## DANISH DESIGN SINCE 1939

Vipp is a Danish, third-generation family-owned company founded in 1939 by metalsmith Holger Nielsen. Rooted in industrial craftsmanship, the company has grown from a single pedal bin into a global design brand, shaped by a belief that function endures when form is honest.

The Vipp Swivel chair continues this thinking. Defined by clean lines and precise mechanics, it is built for movement, comfort, and longevity.



*The Swivel chair launched in 2020. Shown here in Australian sheepskin at the Vipp Shelter - the first in a series of one-of-a-kind Vipp guesthouses around the world.*



*In 2011, Vipp created its first modular kitchen, inspired by Holger's simple, functional design.*



**2026** *Second and third generations of the Vipp family.*



Vipp452 in custom textiles

# MULTIPLE SETTINGS. ONE SMOOTH SPIN

The Vipp Swivel chair is specified across workplaces, hospitality environments, showrooms, and private residences. Built for versatility, it adapts across settings without compromising its expression. View a selection of case studies featuring the Swivel chair.

AKUA OBJECTS



VIPP453+

SHOWROOM

COPENHAGEN, DENMARK



# AKUA OBJECTS



**Founded in 2022, Akua Objects creates poetic glassware crafted from materials sourced across Europe's historic glass capitals. In its Copenhagen showroom, the Vipp453+ Swivel chair takes centre stage.**

Intended for workspaces and conference settings where people sit for extended periods, the Vipp453+ in camel leather is available from stock.



Vipp453+ in camel leather

LACOSTE



VIPP452

CORPORATE HEADQUARTERS

NEW YORK, US



# LACOSTE

Nestled atop a historic pre-war building at 136 Madison Avenue, the new Lacoste US headquarters by design studio Marsollier Villacorta consolidates the company's former three-floor footprint into an 18,000 sq ft workspace.

The offices and meeting rooms are furnished with Vipp Swivel chairs upholstered in Bosco leather, which complement the industrial aesthetic of the workspace and add a refined contrast to its raw materials and clean lines.

*The Vipp452 Swivel chair in Bosco leather is kept in stock.*





Vipp452 in Bosco leather

*“The Vipp Swivel chair was the elegant choice for Lacoste’s new headquarters in New York City. The chair’s design complements the brand’s timeless heritage while providing practical comfort for a modern workspace.”*

- CYRIL MARSOLLIER, INTERIOR DESIGNER

# OMNI KAISER PATISSERIE



VIPP452

OFFICE AND WORKSPACE

SLUPSK, POLAND



# OMNI KAISER PATISSERIE

Designed by ACOS in collaboration with Studio Widoki, the Omni Kaiser Patisserie headquarters is located on the outskirts of Słupsk, adjacent to its pastry production facility.



Vipp452 in camel leather



The project brings together administrative, collaborative and event spaces within a cohesive, material-led architectural language. Vipp452 Swivel chairs in camel leather are specified throughout the office and meeting rooms, complementing a restrained palette of wood, stone and metal.

*The Vipp452 Swivel chair in camel leather is available from stock.*



DESIGN HOTEL



VIPP452

HEADQUARTERS

BERLIN, GERMANY



# DESIGN HOTEL

Designed by RHO Berlin, the Design Hotels headquarters is located in an evolving district of Berlin. The workspace creates a light-filled environment for the brand following more than 30 years at its original office location.



Vipp452 in Bosco leather



Vipp452 in camel leather

Envisioned as a new chapter for the brand, the headquarters reflects Design Hotels' ethos by supporting emerging talent and sustainable approaches to working.

*Vipp452 Swivel chairs in camel and Bosco leather are specified throughout the office spaces - both available from Vipp stock.*

ADURO



VIPP453+

CORPORATE HEADQUARTERS

AARHUS, DENMARK



# ADURO

In an industrial district outside Aarhus, Aduro has furnished its Danish headquarters with Vipp453+ Swivel chairs in custom virgin leather for its meeting rooms.



Vipp 453+ in Vegetal leather by Sørensen Leather



## MADE FOR THE SPACE

Here, the Swivel chair is upholstered in 'Vegetal' leather by Sørensen Leather, specified by the client.



Vipp452 in black leather

# ONE CHAIR. MORE CONFIGURATIONS

The Vipp Swivel chair is designed as a configurable concept, comprising three models, with two to follow - each defined by distinct proportions and predefined features. From compact task seating to more generous executive models, the collection adapts across workspaces and meeting settings.



OPEN TO SPECIFICATION

## Configured in multiple ways and tailored to any space



# TECHNICAL SPECIFICATIONS



VIPP452

*The original. Comfortable and precise. Works seamlessly for both meetings and dining.*



VIPP453

*Extra padding. Extra support. Refines the clean, elegant design for long dinners or focused work.*



VIPP453+

*Height-adjustable. Five-star base. Adapts to any setting, from the home office to commercial spaces.*

PRODUCT FEATURES	VIPP452	VIPP453	VIPP453+
Four-star base	●	●	
Five-star base			●
Gliders or castors	●	●	●
Low backrest	●		
Medium backrest		●	●
Added padding		●	●
Slim silhouette	●		
360° swivel rotation	●	●	●
Height-adjustable			●
Tilt function			●

## PRODUCT DIMENSIONS

### Four-star base

L. 53 cm / 20.8 in

W. 54.5 cm / 21.4 in

H. 76-78 cm / 29.9-30.7 in

Seat height: 45.5 cm / 17.9 in

Armrest height: (452 / 453) 66 cm / 26 in

(453+) 65.5 cm / 25.7 in

### Adjustable height:

(453+ w. castors) 45.5-51.5 cm / 17.9-29.5 in

(453+ w. gliders) 45.5-53 cm / 17.9-20.8 in

## TESTING

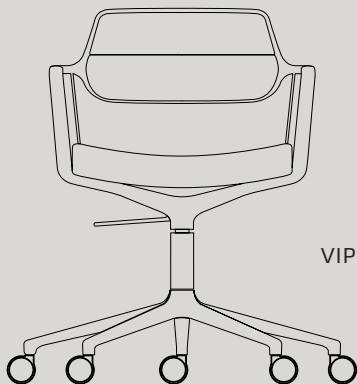
The Vipp Swivel chair with gliders or castors are tested for safety and durability, meeting EN 16139 (L1, L2) and ANSI/BIFMA X5.4-2020 for strength and everyday use.

The foam complies with BS 5852 - Crib 5 and CAL 117, ensuring fire resistance and overall safety.

**Armrest height**  
65.5 cm / 25.7 in

**Seat height**  
45.5 cm / 17.9 in

**Note**  
453+ is height-adjustable  
by 6 cm / 2.3 in



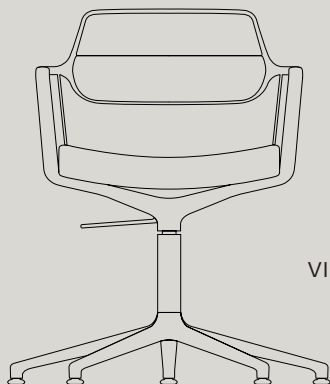
VIPP453+ WITH CASTORS

67 cm / 26.3 in

**Armrest height**  
65.5 cm / 25.7 in

**Seat height**  
45.5 cm / 17.9 in

**Note**  
453+ is height-adjustable  
by 7.5 cm / 2.9 in



VIPP453+ WITH GLIDERS

67 cm / 26.3 in

*The product dimensions above apply to chairs with a five-star base.*

# MATERIALS

---

POLISHED ALUMINUM FRAME

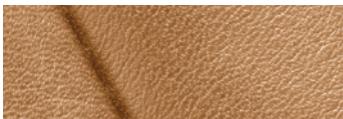


BLACK POWDER-COATED ALUMINUM FRAME



---

CAMEL LEATHER



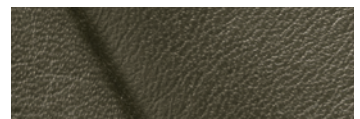
The natural sheen of the camel-coloured leather gives each piece a distinct character. This is a modern leather with minimal grain, a smooth, flat surface and a silky touch.

BLACK LEATHER



A modern leather with minimal grain, a smooth, flat surface and a silky touch. Its finish has a slight, subtle sheen that enhances the material's refined appearance.

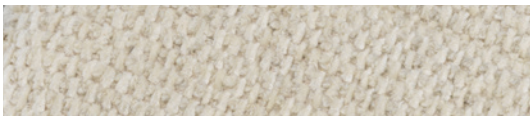
BOSCO LEATHER



This aniline-dyed leather absorbs colour unevenly due to the hide's structure, creating natural variations. Soft and supple, it combines a smooth touch with subtle grain.

---

WAVY TEXTILE



Wavy refers to the fabric's undulating structure, reminiscent of waves seen from above. A wide weave and thick yarn create a distinctive, fluffy surface, making the fabric both visually appealing and soft to the touch.

TIDE TEXTILE



Tide is a refined blend of linen and wool, enhanced with performance fibres for durability and comfort. Linen lends a crisp texture, while wool adds warmth and softness, creating a modern fabric suited for year-round upholstery.

---

## CUSTOM UPHOLSTERY



The Swivel chair can be upholstered in other materials upon request or in customer's own material (COM). This service requires a surcharge and will extend production and delivery time.

## DARLING CREATIVE STUDIO

Darling Creative Studio is a Copenhagen-based creative studio showcasing curated interiors and collectible design.



Vipp453+ in custom-selected Kvadrat textile



#### A CUSTOM SPIN

When Darling Creative Studio moved into their new office in Copenhagen, three custom-made Vipp Swivel chairs were specified to complement the dark wood floors, soft grey walls, and art-lined interiors - adding colour and character to an otherwise restrained space.

*The Vipp453+ Swivel chair is upholstered in three custom-selected Kvadrat textiles.*





Vipp455 in Bosco leather

# THE NEXT SPIN. TWO NEW ADDITIONS

Two new models extend the Swivel chair concept, introducing updated proportions and added comfort. Designed for a wider range of workplace needs, the chairs span from task seating to more supportive solutions for conference and executive settings.





VIPP454

The Vipp454 Swivel chair features improved ergonomics with a lengthened backrest and enlarged seat, ideal for office and conference settings. Support webbing in the seat adds comfort and flexibility.

*Choose the + version for tilt and adjustable height.*



VIPP454+

---



VIPP455

A refined option for executive offices, design-focused workspaces, and meeting rooms, the Vipp455 executive model features a tall backrest and enlarged, padded seat, while retaining its light, architectural aluminium frame.

*Choose the + version for tilt and adjustable height.*



VIPP455+

---



Vipp455+ in Bosco leather

*A selection of more*  
**CASE STUDIES**

**Red Bull HQ · Copenhagen, DK**

At Red Bull's Copenhagen headquarters, the Vipp Swivel chair in black leather is used across conference rooms, offering comfortable seating during meetings.



**General Assembly · New York, US**

Working across interiors, furniture, and objects, the Brooklyn-based design studio General Assembly is known for its considered approach to materials and composition. The Vipp Swivel chair is featured in their workspace.



**david/nicholas · Milan, IT**

The Beirut-born design duo david/nicholas is known for its distinctive blend of tradition and modernity. The Bosco leather Vipp Swivel chair is featured in their offices.





**Hotel Ottilia · Copenhagen, DK**

Vipp Swivel chair in textile upholstery in the new grand suite at Hotel Ottilia in the heart of Copenhagen.



**david/nicholas · Milan, IT**

**Fabian Martinez · Mexico City, MX**

Mexico City-based photographer and visual artist Fabian Martinez is known for an elegant, often melancholic style. His studio features two Vipp Swivel chairs in Bosco leather.





A SERIES OF SWIVEL CHAIRS

# TAKE A CLOSER LOOK



